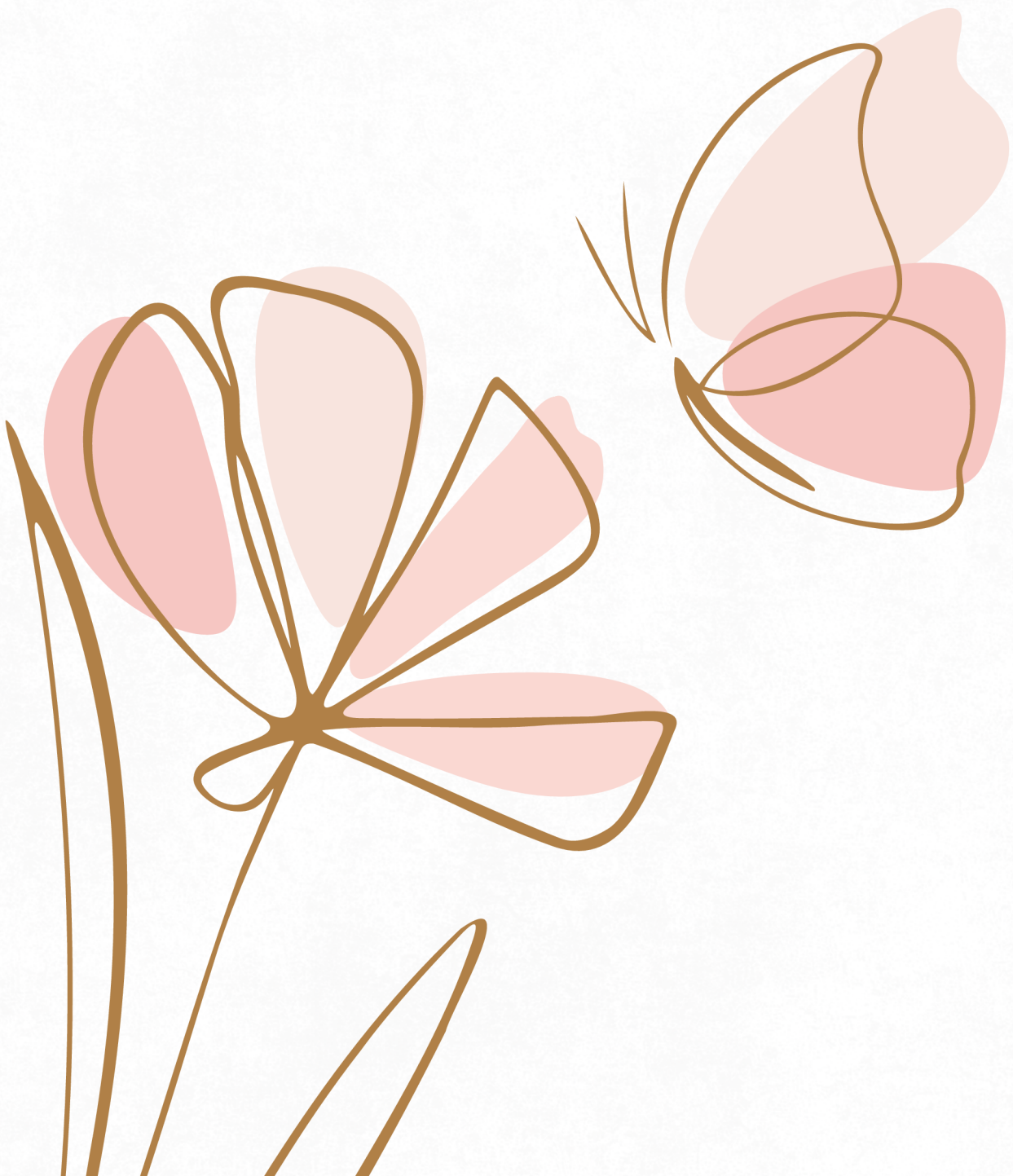




# Annual Calendar

GRADE VI (2026-27)





# Annual Calendar 2026-27

## CELEBRATION SPECTRUM

### APRIL

DATE	THEME SPOTLIGHT
2 <sup>nd</sup> APRIL	WORLD AUTISM AWARENESS DAY/HANUMAN JANMOTSAV
7 <sup>th</sup> APRIL	WORLD HEALTH DAY
13 <sup>th</sup> APRIL	JALLIANWALA BAGH
14 <sup>th</sup> APRIL	DR. B.R. AMBEDKAR /BAISAKHI/BIHU
23 <sup>rd</sup> April	WORLD BOOK DAY
24 <sup>th</sup> April	PANCHAYATI RAJ

### MAY

DATE	THEME SPOTLIGHT
1st May	INTERNATIONAL LABOUR DAY/ BUDDH PURNIMA
8th May	WORLD RED CROSS DAY
9th May	RABINDRANATH TAGORE
9th May	MAHARANA PRATAP JAYANTI
11th May	INTERNATIONAL TECHNOLOGY DAY
10th May	MOTHER'S DAY
12th May	NURSE DAY
22 <sup>nd</sup> MAY	NO TOBACCO DAY
21 <sup>st</sup> MAY	ARMED FORCES DAY

### JUNE

DATE	THEME SPOTLIGHT
5th JUNE	WORLD ENVIRONMENT DAY
21st JUNE	FATHER'S DAY
26th JUNE	ANTI DRUG DAY
28 <sup>th</sup> JUNE	BHAMASHAH JAYANTI

### JULY

DATE	THEME SPOTLIGHT
11 <sup>th</sup> JULY	WORLD POPULATION DAY
15 <sup>th</sup> JULY	WORLD YOUTH SKILLS DAY
23 <sup>rd</sup> JULY	LOKMANYA TILAK JAYANTI
26 <sup>th</sup> JULY	CHANDRASHEKHAR AZAD JAYANTI
28 <sup>th</sup> JULY	NATURE CONSERVATION DAY
29 <sup>th</sup> JULY	GURU PURNIMA
31 <sup>st</sup> JULY	MUNSHI PREMCHAND JAYANTI



# Annual Calendar 2026-27

## CELEBRATION SPECTRUM

### AUGUST

DATE	THEME SPOTLIGHT
6 <sup>th</sup> AUGUST	HIROSHIMA DAY
9 <sup>th</sup> AUGUST	VISHVA ADIVASI DIWAS
12 <sup>th</sup> AUGUST	INTERNATIONAL YOUTH DAY
19 <sup>th</sup> AUGUST	TULSIDAS JAYANTI
20 <sup>th</sup> AUGUST	SADHBHAVANA DIVAS
28 <sup>th</sup> AUGUST	RAKSHABANDHAN/SANSKRIT DIWAS
29 <sup>th</sup> AUGUST	NATIONAL SPORTS DAY

### SEPTEMBER

DATE	THEME SPOTLIGHT
4 <sup>th</sup> SEPTEMBER	JANMASHTAMI
5 <sup>th</sup> SEPTEMBER	TEACHERS' DAY
8 <sup>th</sup> SEPTEMBER	INTERNATIONAL LITERACY DAY
14 <sup>th</sup> SEPTEMBER	GANESH CHATURTHI / HINDI DIWAS
21 <sup>st</sup> SEPTEMBER	INTERNATIONAL DAY OF PEACE
23 <sup>rd</sup> SEPTEMBER	KISHORI JAGRITI DIVAS

### OCTOBER

DATE	THEME SPOTLIGHT
2 <sup>nd</sup> OCTOBER	MAHATMA GANDHI/LAL BAHADUR SHASTRI
10 <sup>th</sup> OCTOBER	WORLD MENTAL HEALTH DAY
11 <sup>th</sup> OCTOBER	INTERNATIONAL GIRL CHILD DAY
20 <sup>th</sup> OCTOBER	DUSSHERA
31 <sup>st</sup> OCTOBER	NATIONAL UNITY DAY

### NOVEMBER

DATE	THEME SPOTLIGHT
8 <sup>th</sup> NOVEMBER	DIWALI
11 <sup>th</sup> NOVEMBER	NATIONAL EDUCATION DAY
24 <sup>th</sup> NOVEMBER	GURU NANAK JAYANTI
26 <sup>th</sup> NOVEMBER	CONSTITUTION DAY



# Annual Calendar 2026-27

## CELEBRATION SPECTRUM

### DECEMBER

DATE	THEME SPOTLIGHT
1 <sup>st</sup> DECEMBER	WORLD AIDS DAY
3 <sup>rd</sup> DECEMBER	INTERNATIONAL DAY OF PERSONS WITH DISABILITIES
10 <sup>th</sup> DECEMBER	INTERNATIONAL HUMAN RIGHTS DAY
14 <sup>th</sup> DECEMBER	ENERGY CONSERVATION DAY
22 <sup>nd</sup> DECEMBER	NATIONAL MATHEMATICS DAY

### JANUARY

DATE	THEME SPOTLIGHT
12 <sup>th</sup> JANUARY	NATIONAL YOUTH DAY/ SWAMI VIVEKANAND
13 <sup>th</sup> JANUARY	LOHRI DAY
14 <sup>th</sup> JANUARY	MAKAR SAKRANTI/PONGAL
23 <sup>rd</sup> JANUARY	NETAJI SUBHASH CHANDRA BOSE
26 <sup>th</sup> JANUARY	REPUBLIC DAY
24 <sup>th</sup> JANUARY	NATIONAL GIRL CHILD DAY
30 <sup>th</sup> JANUARY	MARTYR'S DAY

### FEBRUARY

DATE	THEME SPOTLIGHT
4 <sup>th</sup> FEBRUARY	WORLD CANCER DAY
11 <sup>TH</sup> FEBRUARY	INTERNATIONAL DAY OF WOMEN AND SCIENCE/ BASANT PANCHAMI
14 <sup>TH</sup> FEBRUARY	PULWAMA ATTACK/PARENTS WORSHIP DAY
19 <sup>TH</sup> FEBRUARY	CHATRAPATI SHIVAJI MAHARAJ JAYANTI
21 <sup>ST</sup> FEBRUARY	INTERNATIONAL MOTHER'S LANGUAGE DAY
28 <sup>TH</sup> FEBRUARY	NATIONAL SCIENCE DAY/ C V RAMAN

### MARCH

DATE	THEME SPOTLIGHT
4 <sup>th</sup> MARCH	WORLDWIDE LIFE DAY
6 <sup>TH</sup> MARCH	SHIVRATRI
22 <sup>nd</sup> MARCH	WORLD WATER DAY



THEME- WATER - LIFE IN EVERY DROP				
CATEGORY	EVENT	DATE	DAY	GRADE
COMPETITION	INTERHOUSE KHO-KHO	20 <sup>th</sup> APRIL - 24 <sup>th</sup> APRIL		VI - XII
HOLIDAYS (TENTATIVE)	GOOD FRIDAY	3 <sup>rd</sup> APRIL	FRIDAY	
	JYOTIBA PHULE JAYANTI	11 <sup>th</sup> APRIL	SATURDAY	
	Dr. AMBEDKAR JAYANTI	14 <sup>th</sup> APRIL	TUESDAY	
	PARSHURAM JAYANTI	19 <sup>th</sup> APRIL	SUNDAY	
COMMUNITY OUTREACH	<b>JAL HI JEEVAN HAI</b>			
EXAMINATION SCHEDULED	PT1 CYCLE BEGINS	23 <sup>rd</sup> APRIL TO 1 <sup>st</sup> MAY		X & XII
		2 <sup>nd</sup> May to 8 <sup>th</sup> MAY		VI-IX






### THEME- DIGNITY OF LABOUR

CATEGORY	EVENT	DATE	DAY	GRADE
<b>COMPETITIONS</b>	CULTURAL CANVAS INTERHOUSE	12 <sup>th</sup> MAY to 15 <sup>th</sup> MAY		VI-XII
<b>HOLIDAYS (TENTATIVE)</b>	-	9 <sup>th</sup> MAY	SECOND SATURDAY	
	SUMMER BREAK	20 <sup>th</sup> MAY to 28 <sup>th</sup> JUNE		
	<b>SCHOOL REOPENS ON 29<sup>th</sup> JUNE</b>			
<b>COMMUNITY OUTREACH</b>				
	<b>SHRAM DAAN SABSE BADA DAAN</b>			<b>VI - XII</b>

## CULTURAL CANVAS 12<sup>th</sup> MAY to 19<sup>th</sup> MAY

### INTERHOUSE FASHION DESIGNING

 Best Out of Waste	VI to VII
 Jewellery Making (Bridal Jewelry)	VIII to IX
 Using Sewing Machine	X to XII




### INTERHOUSE COOKING COMPETITION

 Culinary heritage of Gujarat	IX to XII
--	-----------

### INTERHOUSE MUSIC COMPETITION

 Hanuman Chalisa(Recital)	VI to VII
 Musical Band Performance (English Melodies)	VIII to XII

## INTERHOUSE ADVERTISEMENT

 Healthy Kids, Strong Nation(Musical advertisement)	VI to VII
 Digital Branding	VIII to IX
 Documentary Making - Underage wheels...A road to risk	X to XII

## INTERHOUSE GRAFFITI

 Waste Management	VI to VII
 Let's define Chemistry	IX to XII


## INTERHOUSE DANCE COMPETITION

 Theme Mother - Strength wrapped in love	VI to XII
---	-----------

## INTERHOUSE TED TALKS (Ideas that change everything)

 PERSEVERANCE IS THE KEY TO SUCCESS	IX to XII
---	-----------

## INTERHOUSE CHORAL RECITATION COMPETITION

 English Choral Recitation	VI to XII
---	-----------



# Annual Calendar 2026-27

 **JULY 2026**

THEME- WATER CONSERVATION AND RAIN WATER HARVESTING				
CATEGORY	EVENT	DATE	DAY	GRADE
COMPETITIONS	INTERHOUSE FOOTBALL	LAST WEEK OF JULY		VI - XII
	PUPPET MAGIC TALES	20 <sup>TH</sup> JULY	MONDAY	VI
HOLIDAYS (TENTATIVE)	-	11 <sup>th</sup> JULY	SECOND SATURDAY	
COMMUNITY OUTREACH	<p align="center"><b>ADOPTING A TREE</b> THEME : EACH ONE, PLANT ONE</p>			



# Annual Calendar 2026-27



**AUGUST 2026**

## THEME- PATRIOTISM

CATEGORY	EVENT	DATE	DAY	GRADE
<b>CEREMONIES AND TRADITIONS</b>	INDEPENDENCE DAY	15 <sup>th</sup> AUGUST	SATURDAY	I - XII
	NATIONAL DEWORMING DAY	08 <sup>th</sup> AUGUST	SATURDAY	VI - XII
<b>HOLIDAYS (TENTATIVE)</b>	-	8 <sup>th</sup> AUGUST	SECOND SATURDAY	
	VISHWA ADIVASI DIWAS	9 <sup>th</sup> AUGUST	SUNDAY	
	HARIYALI AMAVASYA	12 <sup>th</sup> AUGUST	WEDNESDAY	
	RAKSHABANDHAN	28 <sup>th</sup> AUGUST	FRIDAY	
	EID-E-MILAD (on appearance of moon)	26 <sup>th</sup> AUGUST	WEDNESDAY	
<b>SPORTS</b>	INTERHOUSE INDOOR GAMES			
<b>COMMUNITY OUTREACH</b>	DONATION DRIVE FOR SHELTER ANIMALS			



# Annual Calendar 2026-27



**SEPTEMBER 2026**

**THEME- IT ALWAYS SEEMS IMPOSSIBLE UNTIL IT'S DONE**

CATEGORY	EVENT	DATE		GRADE
VISIT	AHAR MUSEUM			VI
	SARAS DAIRY			V
EXAMINATION SCHEDULE	7 <sup>th</sup> SEPTEMBER to 22 <sup>nd</sup> SEPTEMBER <b>(DO YOUR BEST, FORGET THE REST)</b>			
HOLIDAYS (TENTATIVE)	JANMASTHTAMI	4 <sup>th</sup> SEPTEMBER	FRIDAY	
	SECOND SATURDAY	12 <sup>th</sup> SEPTEMBER	SATURDAY	
	RAMDEV JAYANTI	21 <sup>st</sup> SEPTEMBER	MONDAY	
COMMUNITY OUTREACH	<b>TRUE FRIENDS DON'T JUDGE, THEY SUPPORT AND UPLIFT</b>			
TALKS	CYCLE OF STRENGTH FOR TEENAGE GIRLS	23 <sup>rd</sup> SEPTEMBER	WEDNESDAY	VI - XII



# Annual Calendar 2026-27



**OCTOBER 2026**

**THEME- TRUTH AND GOODNESS ALWAYS RISE**

CATEGORY	EVENT	DATE	DAY	GRADE
<b>COMPETITIONS</b>	DRAWING	3 <sup>RD</sup> OCTOBER	SATURDAY	VI
<b>CEREMONIES &amp; TRADITIONS</b>	DANDIYA CELEBRATION	14 <sup>th</sup> OCTOBER	WEDNESDAY	I - XII
<b>HOLIDAYS (TENTATIVE)</b>	-	10 <sup>th</sup> OCTOBER	SECOND SATURDAY	
	NAVRATRI STHAPANA	11 <sup>th</sup> OCTOBER	SUNDAY	
	DUSHHERA HOLIDAYS	17 <sup>th</sup> - 20 <sup>th</sup> OCTOBER		
<b>COMMUNITY OUTREACH</b>	<b>DANCE, CONNECT, CELEBRATE</b>			



**NOVEMBER 2026**

**THEME- "WATT" YOU SAVE TODAY, LIGHTS TOMORROW"**

CATEGORY	EVENT	DATE	DAY	GRADE
<b>COMPETITIONS</b>	RYTHM REBORN	28 <sup>TH</sup> NOVEMBER	SATURDAY	VI
<b>HOLIDAYS (TENTATIVE)</b>	DIWALI HOLIDAYS	4 <sup>th</sup> to 14 <sup>th</sup> NOVEMBER		
	GURU NANAK JAYANTI	24 <sup>th</sup> NOVEMBER	TUESDAY	
<b>TOURS &amp; EXCURSIONS</b>	10 <sup>th</sup> NOV TO 16 <sup>th</sup> NOV			
<b>COMMUNITY OUTREACH</b>	<b>HAPPINESS GROWS WHEN SHARED</b>			



# Annual Calendar 2026-27



## DECEMBER 2026

### THEME- JINGLE MINGLE AND CELEBRATE

CATEGORY	EVENT	DATE	DAY	GRADE
EXAMINATION SCHEDULE	PT2 CYCLE 2	1 <sup>st</sup> WEEK OF DECEMBER		
FUN TIME PICNIC TIME	2 <sup>nd</sup> WEEK OF DECEMBER			VI TO IX , XI
CELEBRATIONS & TRADITIONS	WINTER CARNIVAL	20 <sup>th</sup> DECEMBER	SUNDAY	I to XII
COMPETITION	THE EXPRESS MASK FEST	DECEMBER		I TO IX, XI
	SCIENCE EXHIBITION	30 <sup>th</sup> DECEMBER	WEDNESDAY	VI to IX, XI
HOLIDAYS (TENTATIVE)	WINTER HOLIDAYS	31 <sup>th</sup> DECEMBER TO 10 <sup>th</sup> JANUARY		
COMMUNITY OUTREACH	COMPASSION FOR ELDERLY			



## JANUARY 2027

### THEME - FROM SOIL TO SOUL - THANK A FARMER

CATEGORY	EVENT	DATE	DAY	GRADE
COMPETITION	ANNUAL SPORTS DAY	23 <sup>rd</sup> JANUARY	SATURDAY	I to XII
	COOKING COMPETITION	23 <sup>RD</sup> JANUARY	SATURDAY	VI
HOLIDAYS (TENTATIVE)	-	9 <sup>th</sup> JANUARY	SECOND SATURDAY	
	GURU GOBIND SINGH JAYANTI	15 <sup>th</sup> JANUARY	TUESDAY	
COMMUNITY OUTREACH	FROM SOIL TO SOUL - THANK A FARMER			



# Annual Calendar 2026-27



**FEBRUARY 2027**

## THEME - DIGITAL ETIQUETTES

CATEGORY	EVENT	DATE	DAY	GRADE
COMPETITION	INTER HOUSE QUIZ COMPETITION	25 <sup>th</sup> FEB	THURSDAY	VI to VIII
	INK FUSION TEST (CALLIGRAPHY)	6 <sup>th</sup> FEB	SATURDAY	VI
HOLIDAYS (TENTATIVE)	DEVNARAYAN JAYANTI	13 <sup>th</sup> FEB	SATURDAY	
	-	13 <sup>th</sup> FEB	SECOND SATURDAY	
COMMUNITY OUTREACH	BOOK DONATION DRIVE			



**MARCH 2027**

## THEME- CELEBRATE COLOURS SPREAD HAPPINESS

CATEGORY	EVENT	DATE	GRADE
EXAMINATION SCHEDULE	FINAL EXAMINATION	3 <sup>RD</sup> TO 18 <sup>TH</sup> MARCH	I TO VIII
DO YOUR BEST, FORGET THE REST			

PS: The school administration retains the prerogative to modify the dates, timings, and program as deemed necessary.